

Fully Integrated

Cargo Insulation & Isolation Systems

for Ford Transit and Transit Connect Vans



Gruau

Gruau (grū-ō) is a France-based company that specializes in van-based commercial upfits. IsoVan products have been produced in Europe since 1976. These decades of experience have allowed Gruau to refine their product into the current industry leader in quality and performance.



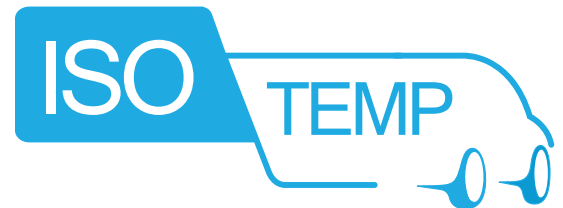
IsoVan

The IsoVan family of products include both IsoTemp and IsoChem. Both products are built with the same design that has been refined over four decades. IsoVan products are engineered specifically for the van they are installed in, resulting in a superior fit and finish.



IsoTemp

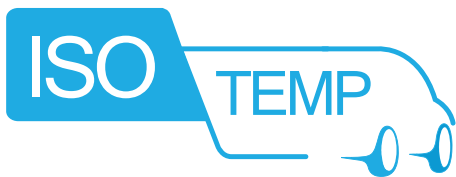
IsoTemp is a system of prefabricated, insulated panels that fit perfectly into each van they are designed for. The superior design of the IsoTemp system results in the industry's best insulated performance and long-term durability, which is especially critical for food transport. The system is also able to be divided into up to 3 separate temperature zones for vehicle flexibility. The floor drain and reefer plumbing behind the bulkhead allow for easy clean up and maintenance.



IsoChem

IsoChem is a system of panels that are installed in your van to 100% seal the passenger compartment from the cargo area. The IsoChem system is independently tested and validated to be 100% sealed from fumes, vapors, and smells. The fit and finish of the kit give it a factory finish look and make clean up quick and easy.





IsoTemp by Gruau

IsoTemp is a fully isolated cargo van system with best-in-class insulation for refrigerated or heated applications.



Unit may be shown with optional features

Standard Features

- A** Modular, insulated fiberglass panels with best-in-class thermal insulation ($K < 0.38$)
- B** Fully insulated side and rear doors with superior double seals
- C** Bonded and double-sealed seams for minimal temperature loss and long-term durability
- D** Return flange floor design for superior seal, durability and cleanability
- E** Non-slip floor texture
- F** Integrated floor drain
- G** LED interior lighting
- H** Roof-mounted reefer unit plumbed on front of bulkhead for maintenance accessibility

**HACCP certified, USDA approved and FMVSS 201U compliant*

IsoTemp Advantages

IsoTemp kit
ideal for:



Food Delivery



Biomedical
Transport

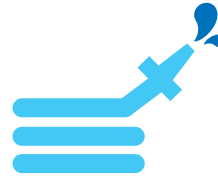


Catering



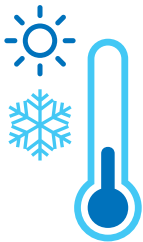
Industry's Best Insulation Performance

- Potential to use smaller reefer unit to achieve temperature maintenance
- Less fuel consumption, wear and tear on van
- Superior food safety



Easy To Clean

Sealed seams and integrated floor drain make cleaning quick and easy



Customizable Up To 3 Temperature Zones

Optional inner panels separate load space in up to 3 sections

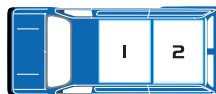


Long-term Durability

Return flange floor design and double-sealed, interlocking panel seams result in superior long-term durability



1 Zone Configuration

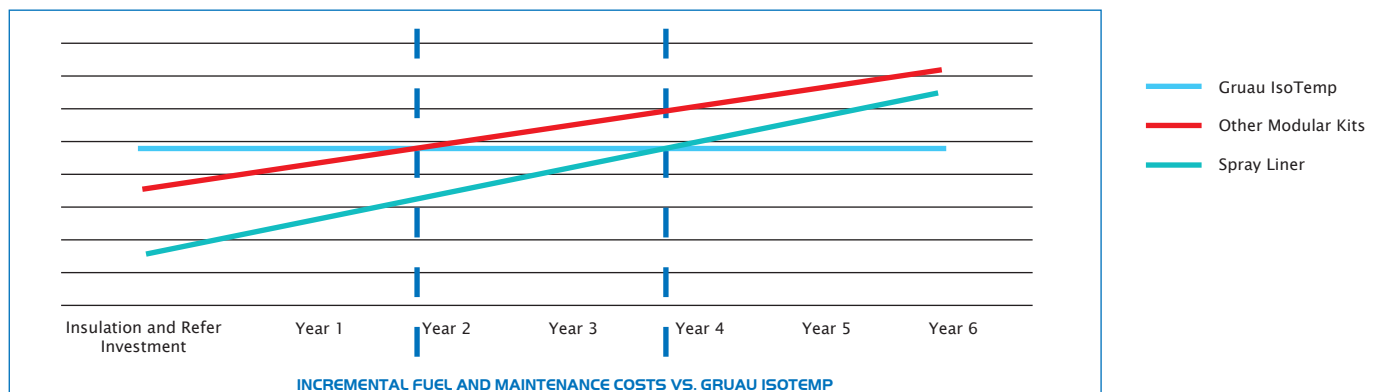


2 Zone Configuration



3 Zone Configuration

IsoTemp Return on Investment



*Calculation based on average price of cargo van insulation and refer price

**Incremental fuel and maintenance cost based on increased engine use with less efficient systems

Popular Options



■ Frozen application
extra side door



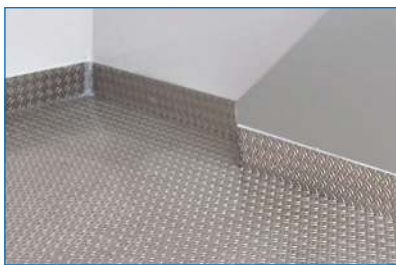
■ Anti-slip aluminum
floor protection



■ Clear PVC strip curtains



■ Stainless steel door
step protection



■ Aluminum low side
protection



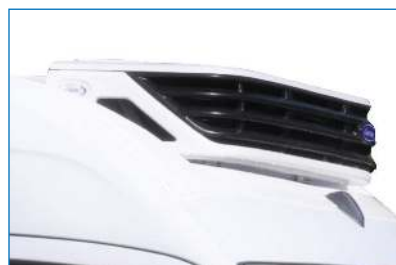
■ Aluminum fold-down
shelving



■ Raised platform
Small vans only



■ E-Track system



■ Reefer roof recess kit
Limited availability

IsoTemp Van Specifications

Van Make	Van Model	Wheelbase	Roof Height	IsoTemp Kit Available	Cargo Area Volume	Inner Length	Inner Width	Inner Height	Kit Weight
Ford	Transit Connect	121 in. (LWB)	Standard	Yes	80.7 cu. ft.	72.6 in.	48.5 in.	43.4 in.	365 lb.
	Transit	130 in. (Regular)	Low	No					
		130 in. (Regular)	Medium	Yes	222.5 cu. ft.	109 in.	58.5 in.	64.6 in.	528 lb.
		148 in. (Long)	Low	No					
		148 in. (Long)	Medium	Yes	258 cu. ft.	127 in.	58.5 in.	60.7 in.	572 lb.
		148 in. (Long)	High	Yes	304 cu. ft.	127 in.	58.5 in.	70.15 in.	638 lb.
		148 in. (Long Extended)	High	Yes	388.5 cu. ft.	155 in.	58.5 in.	70.15 in.	726 lb.

Thermo King Reefer Application

				Thermo King Direct Drive Application			
				10 Door Openings Per Day		30 Door Openings Per Day	
Van Make	Van Model	Wheelbase	Roof Height	Fresh (35°F)	Frozen (-4°F)	Fresh (35°F)	Frozen (-4°F)
Ford	Transit Connect	121 in. (LWB)	Standard	B100	V200 Max	B100	V200 Max
	Transit	130 in. (Regular)	Medium	B100/V200	V200 Max	V200	V520 Max
		148 in. (Long)	Medium	V200	V300 Max	V200	V520 Max
		148 in. (Long)	High	V200	V300 Max	V200	V520 Max
		148 in. (Long Extended)	High	V200	V520 Max	V300	V520 Max

*Outside temperature up to 104°F. Check with your sales representative for outside temperatures over 104°F.

**Standard units have suffix "10." The "10" series does not offer power standby.

***Shore power units are represented with suffix "20." The "20" series is offered with 115/1/60 Hz, 220/1/60 Hz or 230/3/60 Hz power standby options.

Zanotti Reefer Application

				Zanotti Reefer Application	
				30 Door Openings Per Day	
Van Make	Van Model	Wheelbase	Roof Height	Fresh (35°F)	Frozen (-4°F)
Ford	Transit Connect	121 in. (LWB)	Standard	Z120	Z120X
	Transit	130 in. (Regular)	Medium	Z350	Z380X
		148 in. (Long)	Medium	Z350	Z380X
		148 in. (Long)	High	Z350	Z380X
		148 in. (Long Extended)	High	Z380	Z380X

*Outside temperature up to 104°F. Check with your sales representative for outside temperatures over 104°F.

**All units represented in this matrix include standby option.







IsoChem by Gruau

IsoChem 100% isolates the cargo area from the passenger cabin to prevent transfer of fumes, vapors and smells.



*Unit may be shown
with optional features*

Standard Features

- A** Modular ABS panels
- B** Aluminum anti-slip floor protection
- C** Return flange floor design for superior durability and easy cleaning
- D** Integrated floor drain
- E** Integrated cargo tie-down points for securing cargo

Other features not pictured:

- LED interior lighting

**FMVSS 201U compliant*

IsoChem Advantages

IsoChem kit
ideal for:



Pest Control



Chemical
Transport



Pharmaceutical
Transport



Independently Tested and Validated

to be 100% sealed from fumes,
vapors and smells



Sealed ABS Design and Integrated Floor Drain

makes complete cargo area
cleaning quick and easy



Modular Kit Assembly

perfect for one-off orders or high
volume installations



Factory Finish Look

makes resale or re-purpose
seamless



- Power roof vent
Optional vent failure alarm

IsoChem Van Specifications

Van Make	Van Model	Wheelbase	Roof Height	IsoChem Kit Available	Cargo Area Volume	Inner Length	Inner Width	Inner Height	Kit Weight
Ford	Transit Connect	105 in. (SWB)	Standard	No					
		121 in. (LWB)	Standard	Yes	111 cu. ft.	73.7 in.	47.4 in.	47.6 in.	227 lb.

About Gruau



Gruau Group Headquarters
Laval, France

Gruau is a French, 5th generation family-owned company that has been in business for over 125 years, specializing in the conversions of light commercial vehicles. With over 1,350 employees and 50,000 conversions per year for customers and OEMs around the world, Gruau is Europe's leading body builder. Its 17 commercial and industrial facilities offer unique design, commercial and industrial capacity.

Gruau is a referenced supplier to 24 international vehicle brands and designs, manufactures and commercializes more than 20 product lines, and is supported by a network of over 125 distributors and dealers in Europe, North America, Africa and the Middle East.

Request a Quote

✉ michel.menil@gruau.com

☎ 312-952-2458

